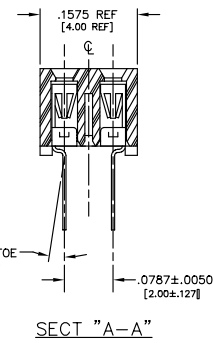
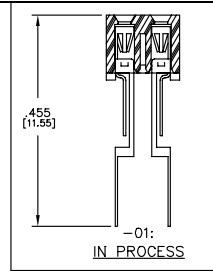
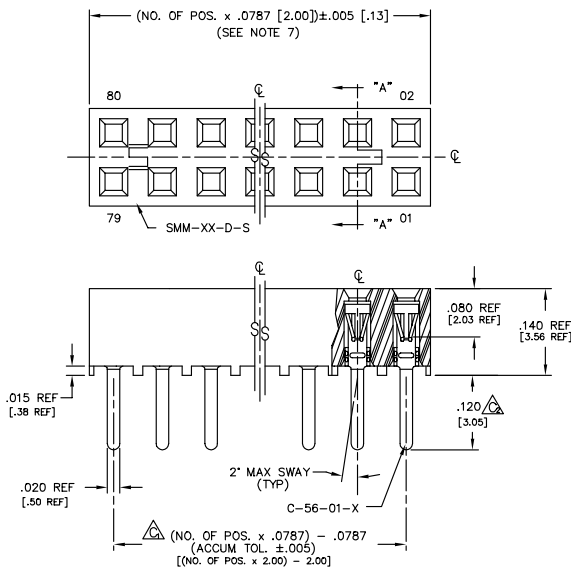


REVISIONS AD

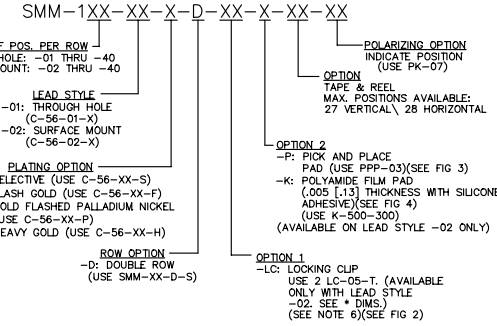
FIG. 1
-01: THROUGH HOLE



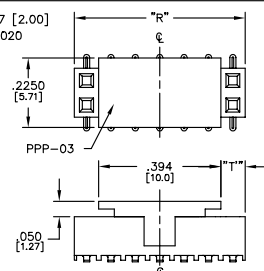
NOTES:

- 1.) RETENTION FORCE IN BODY TO BE: 1 lbs. MIN
- 2.) INSERTION FORCE TO BE: 3.0 oz. MAX.
- 3.) WITHDRAWAL FORCE TO BE: 0.5 oz. MIN.
- 4.) Δ REPRESENTS CRITICAL DIMS. FOR STATISTICAL PROCESS CONTROL.
- 5.) [] DIMS ARE IN METRIC AND ARE NOT CONTROLLING DIMS.
- 6.) "-LC" OPTION FOR A 02 POSITION WILL HAVE ONLY ONE LOCKING CLIP (LC-05-T).
- 7.) "END WALLS" AFTER CUTTING SHOULD BE .017 ± .005.
- 8.) FOR -01 LEAD STYLE, LAYER PACKAGE POSITIONS -01 THRU -04.
- 9.) FOR -02 LEAD STYLE WITHOUT PICK & PLACE PAD, LAYER PACKAGE POSITION -02 ONLY.
- 10.) -P OR -K OPTION OR -02 LEAD STYLE; -TR ONLY ON POSITIONS 2 - 5. POSITION 6 - 40 TUBE OR -TR

DIMENSIONS ARE IN INCHES		UNLESS OTHERWISE NOTED		TOLERANCES ARE:		TITLE:	DWG NO.:
ONE PLACE DECIMALS: ± .1	TWO PLACE DECIMALS: ± .01	THREE PLACE DECIMALS: ± .005	FOUR PLACE DECIMALS: ± .0020	ANGLES:	± 1°	2 mm SOCKET STRIP	SMM-1XX-XX-X-D-XX-X-XX-XX



"R" = No. of POS. x .0787 [2.00]
"s" = {("R" - .394) / 2} ± .020



PACKAGE PARTS IN TUBES AS SHOWN

LEAD STYLE	OPTIONS	POS PER ROW	TUBE	PLUG
-01	NONE, -LC (SEE NOTE 8)	05 THRU 40	PT-1-24-02-16	TP-24
-02	(SEE NOTE 9)	02 THRU 40	PT-1-24-02-16	TP-24
-02	-K, -LC, -K-LC	02 THRU 40	PT-1-24-07-63	TP-24
-02	-P, -P-LC	02 THRU 04	PT-1-24-01-55	TP-24
-01, -02	-P, -P-LC	05 THRU 40	PT-1-24-03-16	TP-03

FIG. 2
-02: SURFACE MOUNT

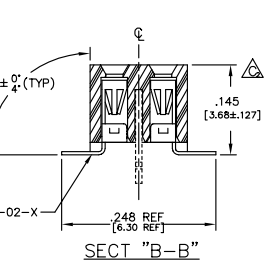
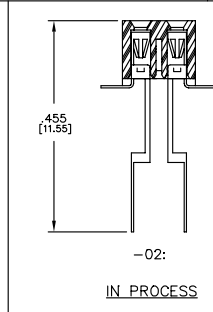
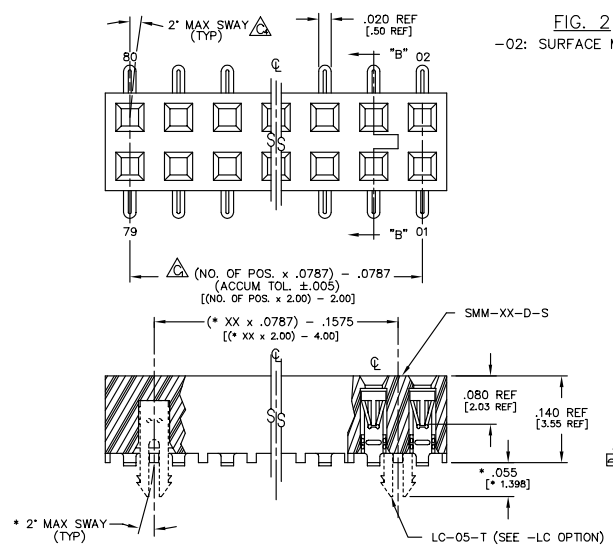
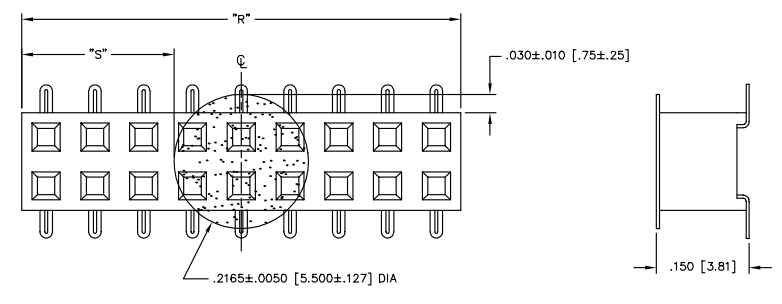


FIG. 3
-P: PICK AND PLACE PAD (PLACE PPP-03 ABOUT C.L. AS SHOWN) (SEE NOTE 10)



NOTE: "R" = USED MEASURED DIMENSION (REF)
"s" = {("R" - .2165 [5.50]) / 2} ± .020 [.51]

FIG. 4
-K: POLYAMIDE FILM PAD

PROPRIETARY NOTE
THIS DOCUMENT CONTAINS INFORMATION CONFIDENTIAL AND PROPRIETARY TO SAMTEC INC. AND SHALL NOT BE REPRODUCED OR TRANSMITTED IN ANY FORM OR BY ANY MEANS, ELECTRONIC OR MECHANICAL, INCLUDING PHOTOCOPYING, RECORDING, OR BY ANY INFORMATION STORAGE AND RETRIEVAL SYSTEMS WITHOUT THE WRITTEN CONSENT OF SAMTEC INC.

MISC/UKT/SMM-1XX-XX-X-D-XX-X-XX-XX-MKT

samtec

520 PARK EAST BLVD., NEW ALBANY, INDIANA 47150
PHONE (812) 944-6733 P.O. BOX 1147
CODE 55322

MADE BY: KOLB 5-21-91
CHECKED BY: DEM

DIRECT APPROVAL: DEM

SMM-1XX-XX-X-D-XX-X-XX-XX
SHEET 1 OF 1

PLOT SCALE: 1=1